

Specification

Cells Per Unit	6
Voltage Per Unit	12
Capacity	40Ah@20hr-rate to 1.75V per cell @25°C
Weight	Approx. 12.8 Kg (Tolerance ±3%)
Max. Discharge Current	350 A (5 sec)
Internal Resistance	Approx. 8.5 mΩ
Operating Temperature Range	Discharge: -40°C~60°C Charge: -20°C~50°C Storage: -40°C~60°C
Normal Operating Temperature Range	25°C ± 5°C
Float charging Voltage	13.6to 13.8 VDC/unit Average at 25°C
Recommended Maximum Charging Current	8.0A
Equalization and Cycle Service	14.2 to 14.4VDC/unit Average at 25°C
Self Discharge	Agr Valve Regulated Lead Acid (VRLA) batteries can be stored for up to 8 months at 25 °C and then recharging is recommended. Monthly Self-discharge ratio is less than 3% at 25. °C Please charge batteries before using.
Terminal	Terminal F4/F11
Container Material	A.B.S. UL94-HB, UL94-V0 Optional.



Agromot Deep Cycle Gel batteries are designed for maintenance-free usage and produced for high performance and trouble-free charge and discharges thanks to its Dry Battery Technology. Provides wide product range for power charge. Particular usage areas;

- Invalid Chair
- Marine yachts and boats
- Solar powered home and workplace systems
- Telecommunication infrastructure networks
- UPS storage systems

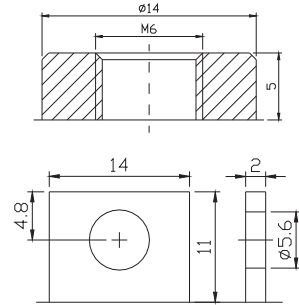
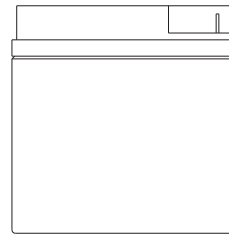
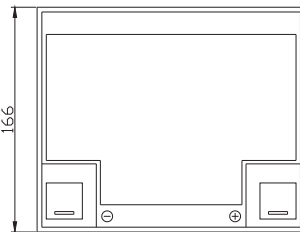
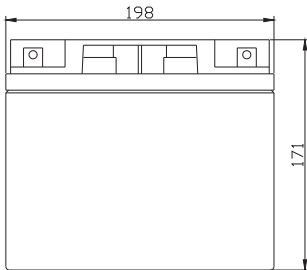
As a result of long time experience and know-how of AGROMOT in deep discharge agm battery systems and excellent engineering technology;

Strong Polypropylene casing •Impregnated AGM separators providing maximum reach by Deep cycle and instantaneous current draw •Controllable process calibration

provide AGROMOT to sustain among the companies in the World market for many years long in terms of quality.

Dimensions

Unit: mm Dimension: 198 (L) × 166 (W) × 171 (H)



Constant Current Discharge Characteristics : A(25°C)

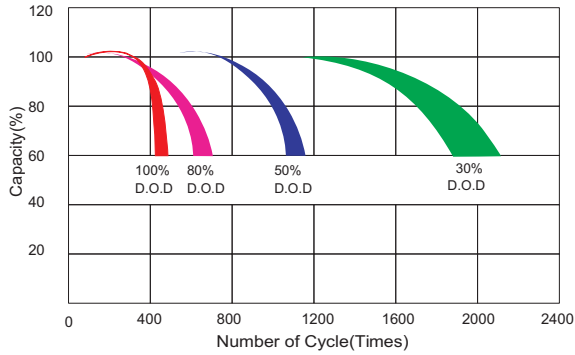
F.V/Time	5MIN	10MIN	15MIN	30MIN	1HR	2HR	3HR	4HR	5HR	8HR	10HR	20HR
9.60V	92.60	68.16	54.01	34.62	21.23	12.05	8.16	6.15	5.89	3.94	3.45	2.04
10.0V	90.24	66.63	53.98	34,10	21.02	11.98	8.01	6.03	5.78	3.85	3.34	2.03
10.2V	88.36	64.20	51.06	33,52	20.87	11.56	7,76	5.85	5.65	3.82	3.24	2.01
10.5V	82.63	60.14	49,99	32,98	20.14	11.05	7.22	5.36	5.25	3.75	3.22	2.00
10.8V	75.58	58.00	48.72	32,05	20.01	12.75	7.02	5.24	5.12	3.69	3.18	1.87
11.1V	65.78	51.09	43.63	31,54	19.85	12.17	6.89	5.12	4.85	3.49	3.07	1.72

Constant Current Discharge Characteristics : WPC(25°C)

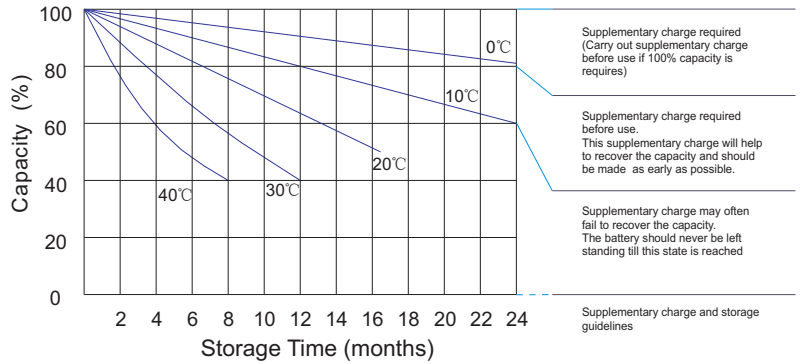
F.V/Time	5MIN	10MIN	15MIN	30MIN	1HR	2HR	3HR	4HR	5HR	8HR	10HR	20HR
9.60V	986	715	542	385	229	145	112	92	78	52	42	24
10.0V	975	685	538	362	214	132	109	91	76	51	41	24
10.2V	967	674	524	347	200	125	108	89	74	51	40	24
10.5V	927	630	499	324	178	120	105	87	74	50	39	23
10.8V	841	599	475	319	170	113	101	85	72	48	38	23
11.1V	712	541	426	300	165	109	99	83	69	46	37	22

All mentioned values are average values (Tolerance ±3%).

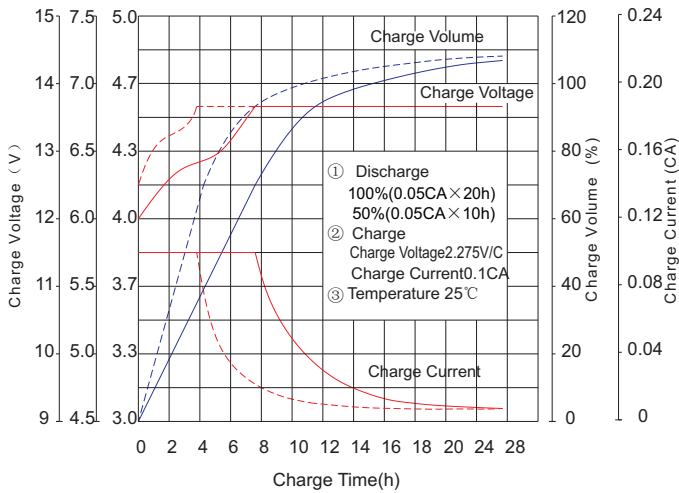
Life characteristics of cyclic use



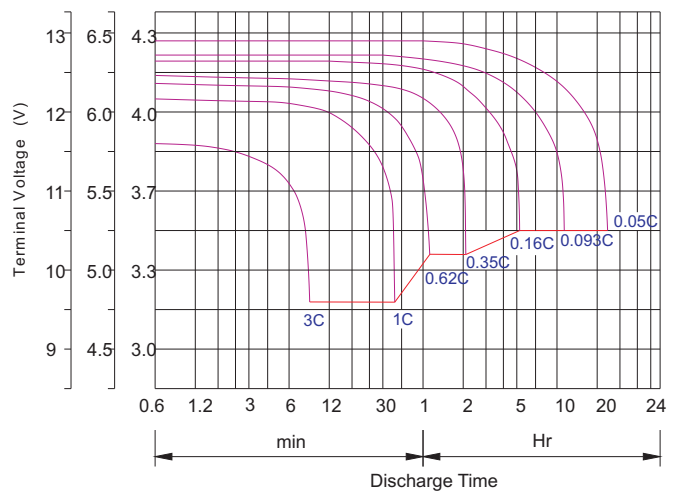
Storage characteristic



Charge characteristic curve for cyclic use



Discharge characteristic curve



Agromot Gıda Enerji İç ve Dış Tic. LTD. ŞTİ

Çalı Mah. Eflatun Cad. No:20/1 NİLÜFER / BURSA (FACTORY)
 Contact: +90 0224 441 00 48
 e-mail : info@agromot.com.tr

